

Hello Digital!

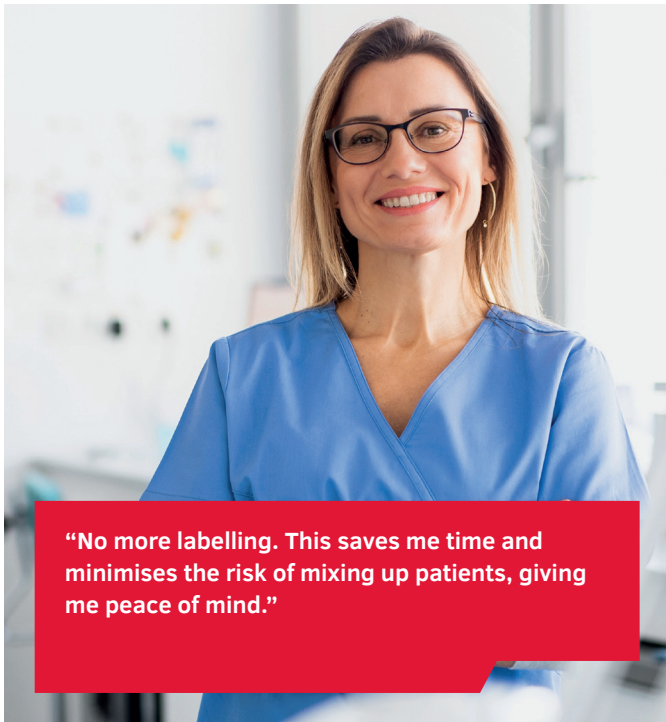
Digitalise your pre-analytics



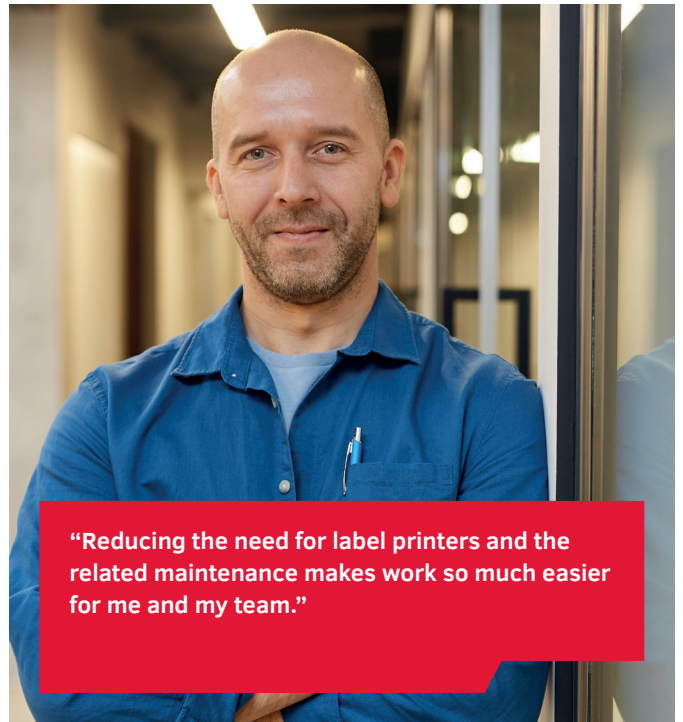
Pre-analytics

Win-win

Our pre-barcode and your laboratory information system



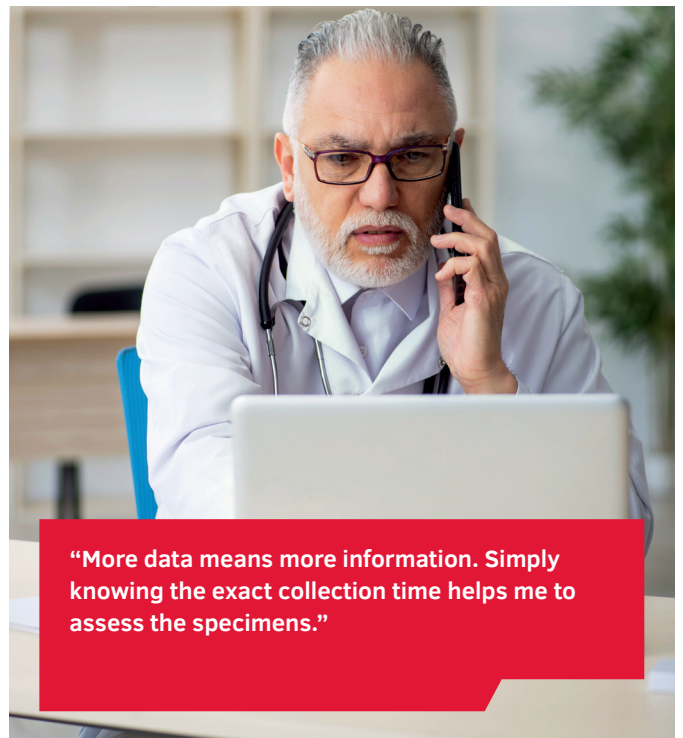
“No more labelling. This saves me time and minimises the risk of mixing up patients, giving me peace of mind.”



“Reducing the need for label printers and the related maintenance makes work so much easier for me and my team.”



“Illegible barcodes are a thing of the past. As a result, automation in my laboratory runs smoothly.”



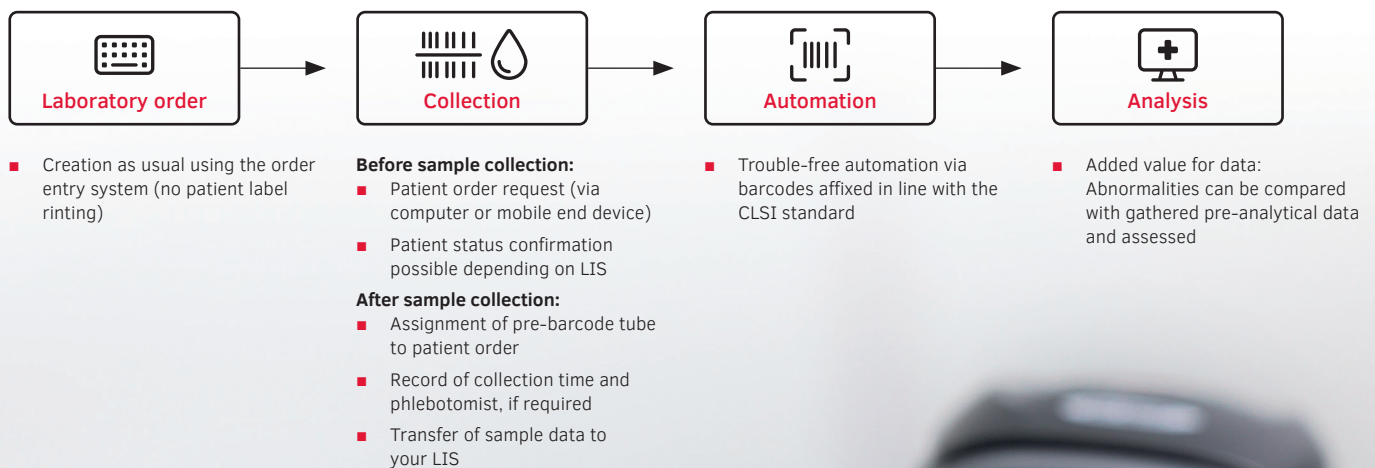
“More data means more information. Simply knowing the exact collection time helps me to assess the specimens.”

The interaction between pre-barcoded sample tubes and a laboratory information system (LIS) enables digitalisation of your pre-analytics. This process optimisation puts safety first—by eliminating the tedious and error-prone process of attaching labels, you can prevent patient mix-ups and take the strain off your staff.

You can also use digitalisation to collect comprehensive pre-analytical data. For example, to digitally confirm patient identity and exact times of sample collection.

Digitalise your pre-analytics with SARSTEDT.
Hello digital!

Digital pre-analytics process with pre-barcoded sample tubes



Ask your laboratory information system provider about the full range of functions.



pre-barcode

The next step towards digital pre-analytics

With pre-barcode specimen tubes, you'll be taking the next step towards a digital future for your pre-analytics. Minimise sources of errors, streamline processes and ensure the quality of your samples.

Simply safe

- The direct assignment of patients to samples prevents mix-ups due to incorrectly attached labels. This increases your patients' safety and saves you from having to repeat sample collection.
- Your automated sample processing in the laboratory is supported by pre-barcode sample tubes and thus optimally placed barcodes— sample tubes missing barcodes or with incorrectly attached barcodes become a thing of the past. This accelerates your automation while reducing the likelihood of errors.
- Pre-barcode sample tubes are digitally linked with a patient order. This facilitates the collection of pre-analytical data. The data can be used to reconcile abnormalities during analysis.

Process optimisation begins even before sample collection.

Indeed, there is no longer any need to manually create patient labels, attach them to the sample tubes or assign them to a patient order. Freed-up resources can be allocated to different areas and costs reduced.

For collection, simply reach into the case with the pre-barcode sample tubes and use any S-Monovette® or Urine Monovette® to collect samples.



SARSTEDT pre-barcode

No attaching labels, greater safety, more time for the things that matter— lower costs

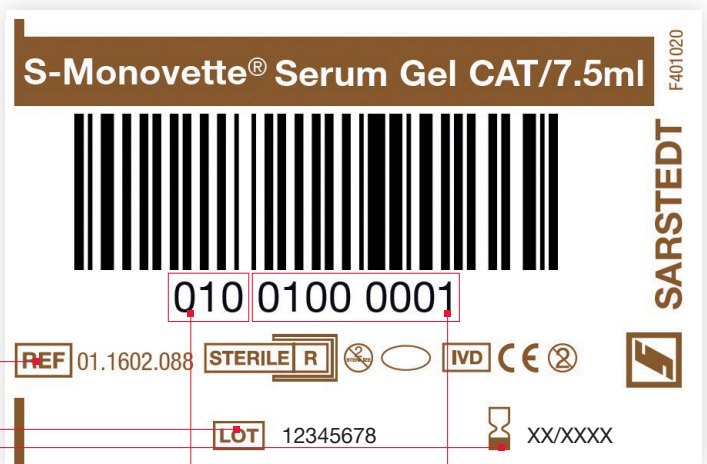


Find out more
about digital
pre-analytics

[sarstedt.com/
digital-en](https://sarstedt.com/digital-en)

Structure & classification system of the pre-barcode label

- An 11-digit numeric 128 barcode is used on the label.
- A 3-digit prefix is used to identify the product.
- An 8-digit number ensures the sample is uniquely assigned to the patient.



Imprinted article
number, batch and
expiry date for visual
inspection

Prefix for clear
differentiation of
sample tubes
(e.g. 010 = 7.5 ml
serum gel)

Barcode numbering
for the unambiguous
assignment of the
specimen to the patient
order

pre-barcode from SARSTEDT

Here's how digital pre-analytics works ...

Utilise all the advantages of our pre-barcoded sample tubes

- Avoid patient and specimen mix-ups
- Save time and resources
- Optimise automation via barcodes affixed in line with the CLSI AUTO02 standard
- Optimise your pre-analytical workflow with the high quality S-Monovette® and Urine Monovette®



Find out more
about digital
pre-analytics

[sarstedt.com/
digital-en](https://sarstedt.com/digital-en)



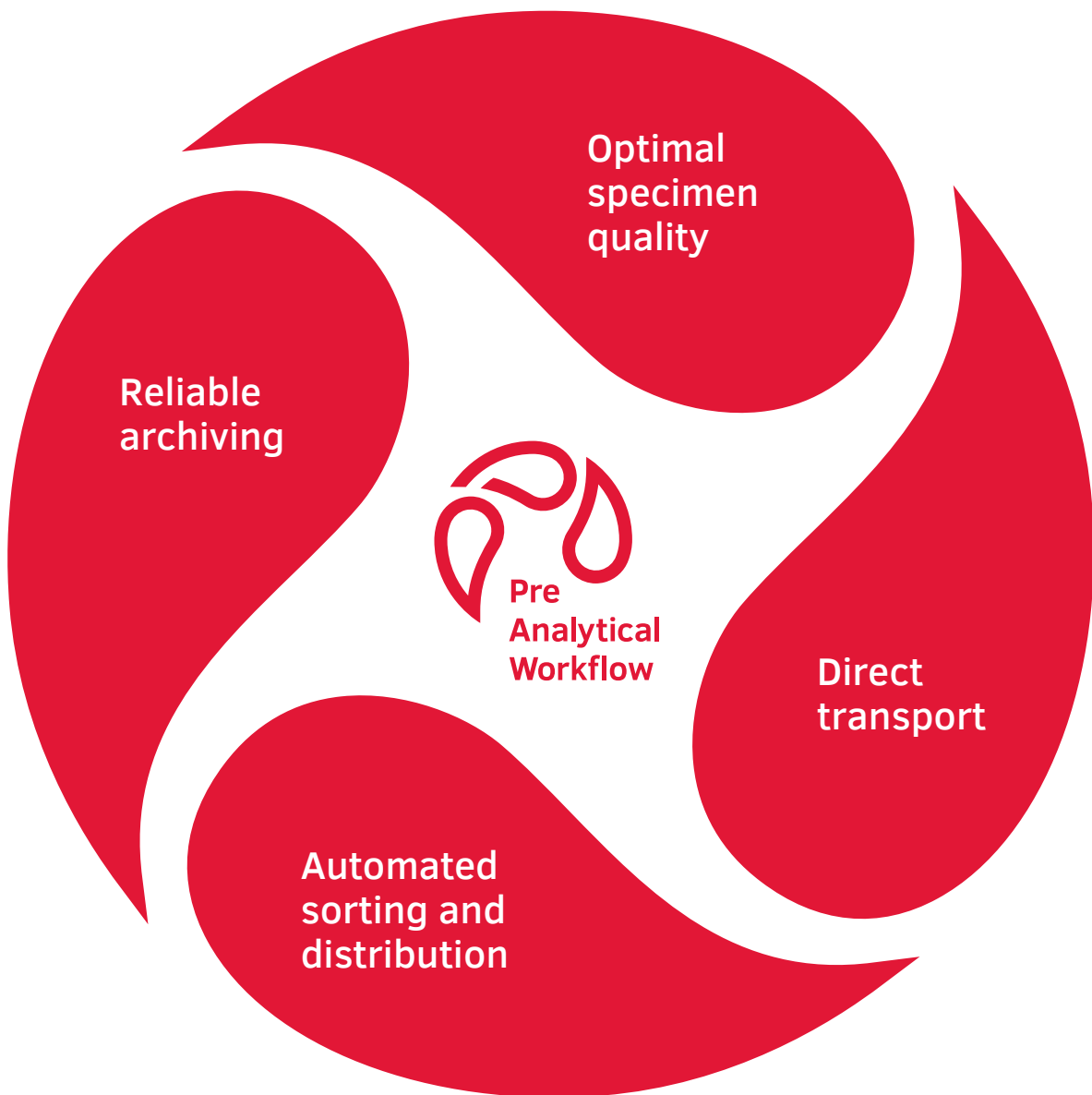
Preanalytic Workflow made by SARSTEDT

Utilise the synergy of our
coordinated systems.

Discover the 360°
solutions for your
pre-analytics from
SARSTEDT



[sarstedt.com/
digital-wf-en](https://sarstedt.com/digital-wf-en)



If you have any questions:
We'd be happy to help!

Visit our website:
www.sarstedt.com

SARSTEDT AG & Co. KG

Sarstedtstraße 1
D-51588 Nümbrecht

Phone: +49 2293 305 0
Fax: +49 2293 305 3992

export@sarstedt.com
www.sarstedt.com



More information,
videos and advice:
digital.sarstedt.com